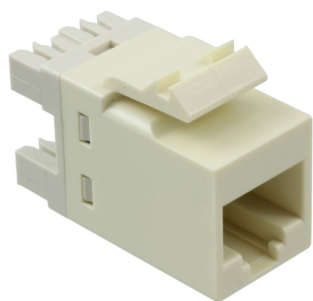


1375192-1



SL110 Series Modular Jack, 8-position, RJ11, category 3, unshielded, without dust cover, almond

This product will be discontinued on: August 31, 2022

Product Classification

Regional Availability

Asia | Australia/New Zealand | EMEA | Latin America | North America

Portfolio

CommScope®

Product Type

Modular jack

Product Series

SL Series

General Specifications

ANSI/TIA Category

3

Cable Type

Unshielded

Color

Almond

Conductor Type

Solid | Stranded

Integrated Dust Cover Type

None

Mounting

SL Series faceplates and panels

Mounting Note

Color matches with SL-style Almond Faceplates and Surface Mount Boxes

Outlet Type

Standard

Termination Tool

SL Termination tool

Termination Type

IDC

Transmission Standards

ANSI/TIA-568-C.2 | ISO/IEC 11801 Class C

Wiring

T568A | T568B

Dimensions

1375192-1

Panel Cutout, recommended	14.78 x 20.07 mm (0.58 x 0.79 in)
Panel Thickness, recommended	1.6 mm 0.063 in
Height	16.26 mm 0.64 in
Width	14.48 mm 0.57 in
Depth	30.48 mm 1.2 in
Compatible Cable Diameter, maximum	5.8 mm 0.228 in
Compatible Insulated Conductor Diameter, maximum	1.45 mm 0.057 in
Contact Plating Thickness	1.27 µm
Compatible Conductor Gauge, solid	24–22 AWG
Compatible Conductor Gauge, stranded	26–24 AWG

Electrical Specifications

Current Rating, maximum	0.75 A
Safety Voltage Rating	150 Vac

Material Specifications

Contact Base Material	Beryllium copper
Contact Plating Material	Gold
Material Type	Polycarbonate

Environmental Specifications

Operating Temperature	-10 °C to +60 °C (+14 °F to +140 °F)
Flammability Rating	UL 94 V-0

Packaging and Weights

Packaging quantity	1
Packaging Type	Bag

Regulatory Compliance/Certifications

Agency	Classification
CHINA-ROHS	Below maximum concentration value
REACH-SVHC	Compliant as per SVHC revision on www.commscope.com/ProductCompliance
ROHS	Compliant

